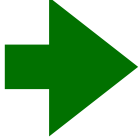
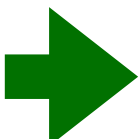


Habitats and Homes Along the Beaver Creek Forest Road 659



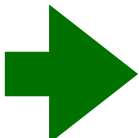
As you head out on the trail think about what you need in your house to survive? What is your home like? What is it made out of?

Just like people, all kinds of animals need homes too! But their homes are very different than ours. What do you think they need in their homes?

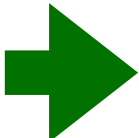


As you walk look down. What are signs of animal or insect homes? (Disturbed dirt, small holes, large piles) What animals might live in these homes?

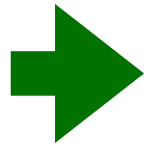
You can draw a picture of the animal and its home below:



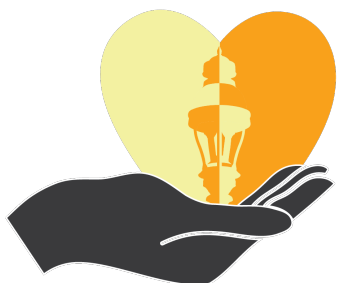
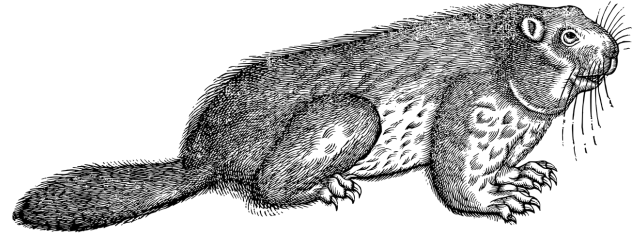
Do you see the log cabin? People used to live in that home, what might live there now?



Now, take time to look up. Do you see different kinds of trees? What animals might live in the trees? What kinds of houses do they build and live in? You can draw a picture of those animals and their homes below:



Keep an eye out for the ponds on the right. All along this road is a flowing stream. This stream is directed by the way beavers live and work! Beavers build a special home called a lodge. It looks like a large mound of logs and dirt in a pond. Beavers also build dams to make the ponds so that their homes stay safe. Do you see any lodges or dams? Do you see any stumps where beavers have cut down trees? Why do you think a beaver would make their home in a pond?



BGV GIVES

